



Bulk-Toter Conveyors



Self-regulating design allows flood-feeding from rail car or truck.



Specially designed to transfer free-flowing bulk materials, Bulk-Toters provide safe, dust-tight, spill-proof all weather conveying. Their ability to incline at steep angles makes it possible for Bulk-Toters to replace a traditional two piece receiving system - conveyor feeding a bucket elevator - with just the one Bulk-Toter.

Since their introduction in the 1960's, Sackett Bulk-Toters have earned an unsurpassed reputation for reliability, clean operation, convenience and speed. Their self-regulating in-feed hoppers allow flood feeding without fear of overloading them or any equipment downstream.

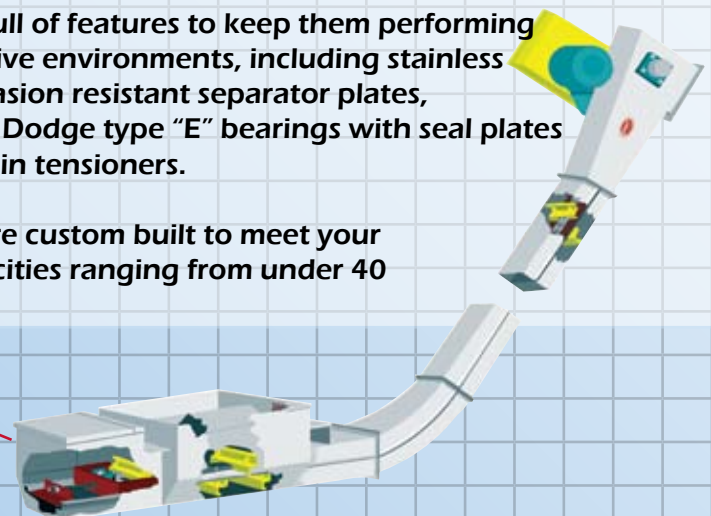
Bulk-Toters are full of features to keep them performing reliably in corrosive environments, including stainless steel bodies, abrasion resistant separator plates, urethane flights, Dodge type "E" bearings with seal plates and stainless chain tensioners.

All Bulk-Toters are custom built to meet your needs with capacities ranging from under 40 to over 700 TPH.

Tail section is sealed and waterproof, with no bearings on the outside.

Take-up assembly is easy to adjust via top hinged access door.

Cutaway drawing shows chain tensioning take-up inside the sealed tail



Bulk-Toter Specifications

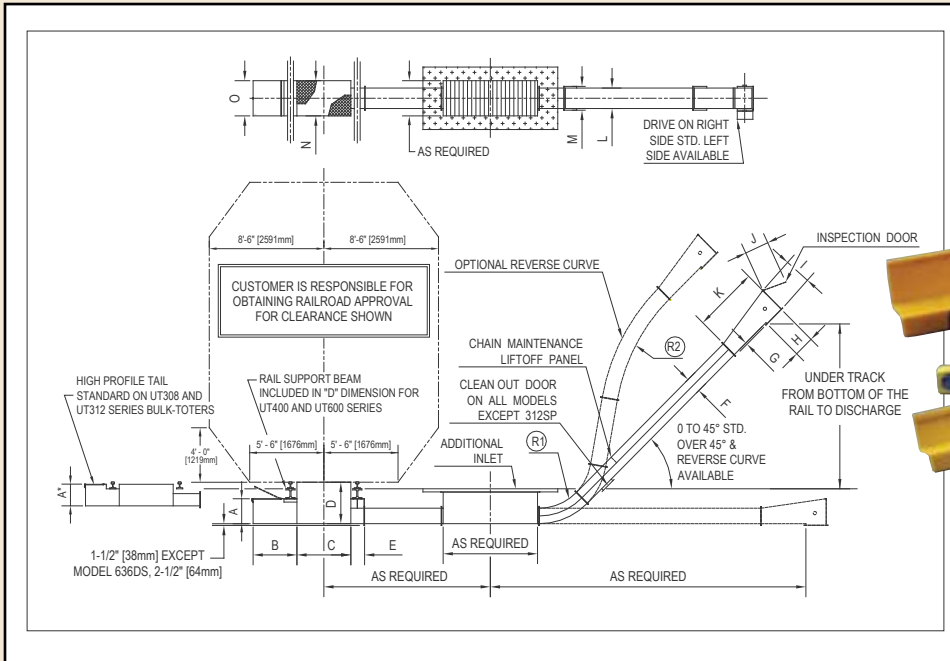
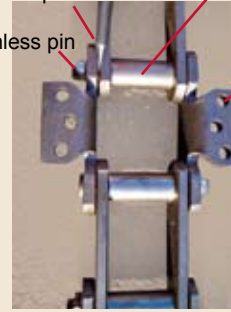
Sackett Bulk-Toter chain and flights are the heart of the conveyor, and are designed to perform reliably in a corrosive environment. Our style 188 and 102 chain feature hardened stainless pins and bushings. Our flights are made of urethane, which has much better wear resistance than UHMW. Our K2 flight attachments are much stronger than competitors' tabs welded to the chain. The K2's horizontal attachment eliminates the chance of bending failure.

Extended clearance bushing keeps chain sidebars apart

Hardened stainless bushing

Hardened stainless pin

K2 Flight attachment



UT - Designates Undertrack (Rail) Tail Section
GP - Designates General Purpose Tail Section

Dimensions In Inches

MODEL	A-UT	A-GP	B	C	D-UT	D-GP	E-UT	E-GP	F	G	H	I	J	K	L	M	N	O	R1	R2	TPH @ 60 lb/ft ³
308	21	15	32	48	21	21	11.5	1.5	10.75	1.5	15	18.5	17.5	56	8	11.25	20	20.75	60-120	180	5 to 45 TPH
312SP	15	15	30	48	19	19	1.5	1.5	10.75	1.5	15	16.25	NA	56	12	15.25	24	20.5	60-120	180	60 to 90 TPH
312XT	17	17	32	48	23	23	18	1.5	10.75	1.5	15	20.5	19.5	56	12	15.25	24	24.75	60-120	180	40 to 80 TPH
418	22	22	39	48	36.5	28	11.5	1.5	13.625	2	18	24	22.5	58	18	21.25	31	31.75	60-120	240	100 to 165 TPH
618	32	32	42	48	46.5	38	11.5	1.5	18.875	2	26	38.25	36.75	72	18	21.25	31	31.75	60-120	300	150 to 225 TPH
424DS	22	22	39	48	36.5	28	11.5	1.5	13.625	2	24	30.625	29.13	58	24	27.25	37	37.75	60-120	240	130 to 200 TPH
624DS	35	35	42	48	49.5	41	11.5	1.5	17.5	2	26	37.5	36	72	24	27.25	38	38	60-120	300	175 to 300 TPH
636DS	33	33	44	48	51.5	49.5	11.5	1.5	19.125	2.5	26	38.75	36	72	36	41	50	50	60-120	300	290 to 430 TPH
936DS	39	39	50	48	57.5	55.5	11.5	1.5	25.125	2.5	29	44.75	42	78	36	41	50	50	120	300	410 to 730 TPH

Dimensions In Millimeters

MODEL	A-UT	A-GP	B	C	D-UT	D-GP	E-UT	E-GP	F	G	H	I	J	K	L	M	N	O	R1	R2	MTPH @ 961 kg/m ³
308	533.4	381	812.8	1219.2	533.4	533.4	292.1	38.1	273.05	38.1	381	469.9	444.5	1422.4	203.2	285.75	508	527.05	1524-3048	4572	4.5 to 41 MTPH
312SP	381	381	762	1219.2	482.6	482.6	38.1	38.1	273.05	38.1	381	412.75	NA	1422.4	304.8	387.35	609.6	520.7	1524-3048	4572	54 to 81 MTPH
312XT	431.8	431.8	812.8	1219.2	584.2	584.2	457.2	38.1	273.05	38.1	381	520.7	495.3	1422.4	304.8	387.35	609.6	628.65	1524-3048	4572	36 to 72 MTPH
418	558.8	558.8	990.6	1219.2	927.1	711.2	292.1	38.1	346.075	50.8	457.2	609.6	571.5	1473.2	457.2	539.75	787.4	806.45	1524-3048	6096	90 to 150 MTPH
618	812.8	812.8	1066.8	1219.2	1181.1	965.2	292.1	38.1	479.425	50.8	660.4	971.55	933.45	1828.8	457.2	539.75	787.4	806.45	1524-3048	7620	136 to 204 MTPH
424DS	558.8	558.8	990.6	1219.2	927.1	711.2	292.1	38.1	346.075	50.8	609.6	777.875	739.902	1473.2	609.6	692.15	939.8	958.85	1524-3048	6096	118 to 181 MTPH
624DS	889	889	1066.8	1219.2	1257.3	1041.4	292.1	292.1	444.5	50.8	660.4	952.5	914.4	1828.8	609.6	692.15	965.2	965.2	1524-3048	7620	159 to 272 MTPH
636DS	838.2	838.2	1117.6	1219.2	1308.1	1257.3	292.1	292.1	485.775	63.5	660.4	984.25	914.4	1828.8	914.4	1041.4	1270	1270	1524-3048	7620	263 to 390 MTPH
936DS	990.6	990.6	1270	1219.2	1460.5	1409.7	292.1	292.1	638.175	63.5	736.6	1136.65	1066.8	1981.2	914.4	1041.4	1270	1270	3048	7620	371 to 662 MTPH

* "D - UT" dimensions include 8-3/4" (222mm) tall rail reinforcement beams for models 418 through 624. Model 636 & 936 "D - UT" dimension includes beams 12-3/8" (308mm) tall. The 308 and 312 models do not normally require a rail support beam. If a beam is required for a 308 or 312 installation, add 8-3/4" (222mm) to the "D - UT" dimension for a set of support beams. Check with your railroad officials to determine their rail reinforcement beam requirements.

The A. J. Sackett & Sons Company
 1701 S. Highland Avenue, Baltimore, Maryland 21224 USA
 Phone 410.276.4466 Fax 410.276.0241
 www.ajsackett.com
 e-mail: sales@ajsackett.com

