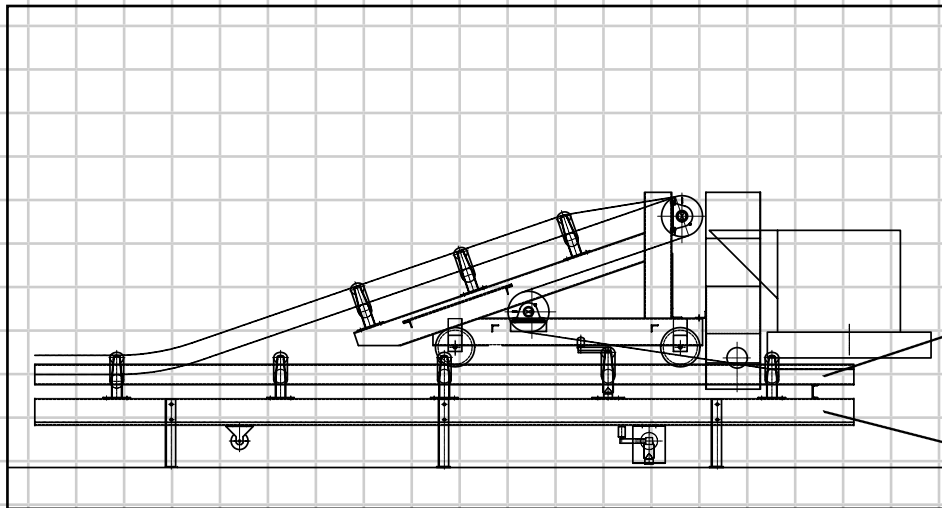


A. J. Sackett Case Study

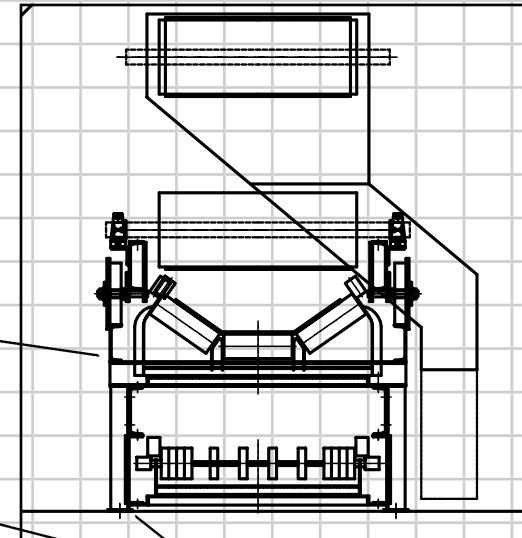
Job: B4196 Customer: CPS Location: Danville, IL
Date Commissioned: August 2001

Pa. 1 of 2

Job Scope: Replace a series of overhead conveyors in this 900' warehouse with one overhead tripper conveyor. Receive fertilizer at 300 TPH. Complication: Two sets of sidings, one on each side of warehouse are used to charge the building. Customer required product "A" to be received from the east rail at the same time product "B" is received on the west siding. Thus two separate fertilizers needed to be tripped into bays of the same conveyor at the same time. Solution: Two independent trippers on the same 30" wide CEMA conveyor.



Tripper Rail
C6 8.2 lb/ft
Channel



Conveyor Frame
C8 11.5 lb/ft
Channel



A. J. Sackett Case Study

Job: B4196 Customer: CPS Location: Danville, IL
 Date Commissioned: August, 2001

Pg.2 of 2

