



# Lump-Busters



Designed to rapidly and efficiently break up large lumps in one pass, the Sackett Lump-Buster is the best choice for use with large firm lumps in high humidity conditions. Because the Lump-Buster has no screen to clean, maintenance is kept to a minimum.

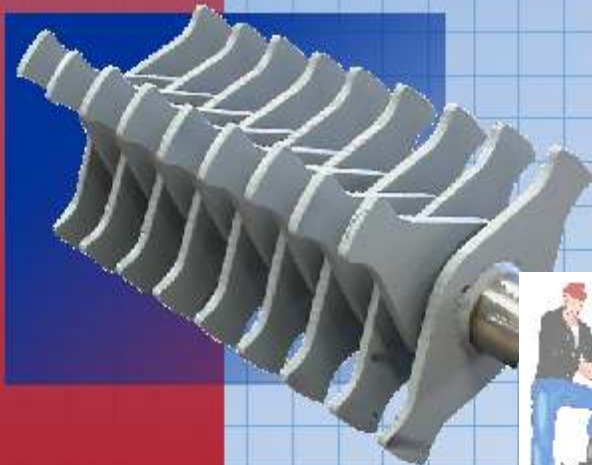
Available with a wide range of feed hoppers, the Lump-Buster has been very successful in taking distressed fertilizers and returning them to a marketable product.



The Lump-Buster's low speed (58 RPM) rotor easily breaks lumps as the rotor blades impact them over the heavy-duty grate. A large by-pass area is built into the unit so on-size product can pass through the grate without being impacted by the rotor blades. This makes the unit gentler on materials, lowers horsepower requirements and speeds material flow.



Model 90 Lump-Buster with 12' X 5' payloader hopper, Mounted over Bulk-Toter.



Self-Cleaning: Shown at right is a model 21 Lump-Buster. The relationship between the rotor blades and grate is evident. This model has 3/8" thick rotor blades and a 3/8" thick bar grate. The opening space between the grate bars is 3/4" allowing the rotor blade, to clear the grate by 3/16".



Sackett's highly efficient "rock pick" blade grabs lumps, bites into them, and crushes them all in one efficient step. Should the blades wear down, simply reverse rotor direction and use the opposite edge for lump breaking. A Sackett tradition, all shafting, bearings, and drives are designed for heavy-duty, around the clock

The Finest Quality Since 1897



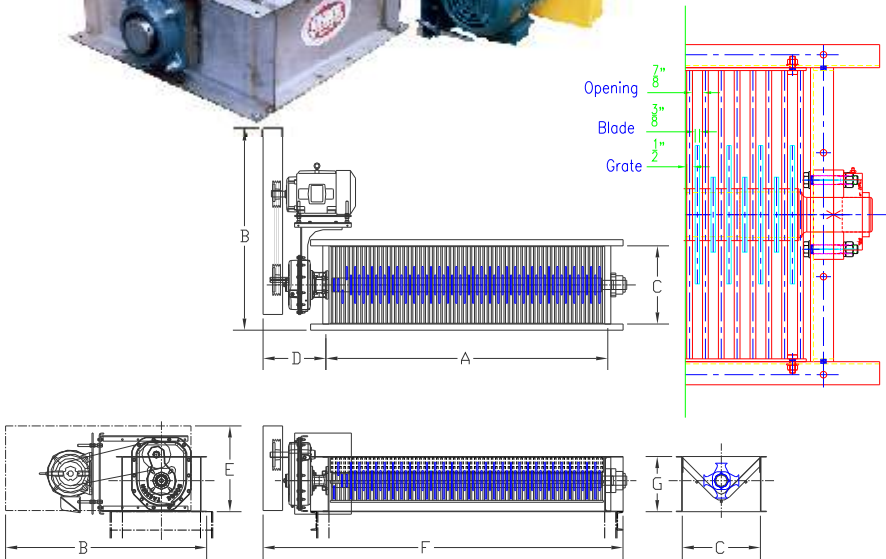
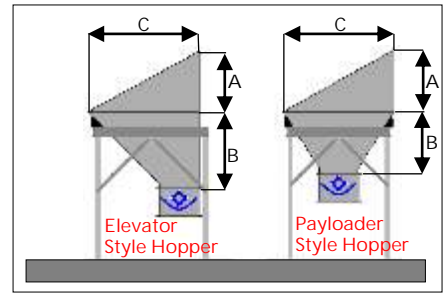
# Lump-Buster Options & Specifications



A- 6' X 6' hopper mounted over model 21 Lump-Buster  
 B- Note waste pack seal for bearing protection  
 C- Payloader style hopper over Lump-Buster. Note grate.  
 E- Model 21 showing standard Drive package for models 21-90



## Hoppers For Lump-Busters



		PAYLOADER STYLE HOPPER			ELEVATOR STYLE HOPPER		
		ENGLISH INCHES			ENGLISH INCHES		
MODEL	WIDTH	A	B	C	A	B	C
21	96	27	45	48	24	42	36
21	120	27	53	60	27	53	48
36	96	27	34	48	24	34	36
36	120	27	45	72	27	46	48
54	96	21	23	48	20	23	36
54	120	27	34	60	27	34	48
54	144	27	45	60	24	45	48
90	96	27	14	48	21	13.5	36
90	120	34	20	60	27	25	48
90	144	34	27.0	72.0	34	37.0	60.0
90	168	40	39.5	72.0	39	49.0	72.0
		PAYLOADER STYLE HOPPER			ELEVATOR STYLE HOPPER		
		METRIC METERS			METRIC METERS		
MODEL	WIDTH	A	B	C	A	B	C
21	0.334	0.094	0.157	0.167	0.084	0.146	0.125
21	0.418	0.094	0.184	0.209	0.094	0.184	0.167
36	0.334	0.094	0.118	0.167	0.084	0.118	0.125
36	0.418	0.094	0.157	0.251	0.094	0.160	0.167
54	0.334	0.073	0.080	0.167	0.070	0.080	0.125
54	0.418	0.094	0.118	0.209	0.094	0.118	0.167
54	0.501	0.094	0.157	0.209	0.084	0.157	0.167
90	0.334	0.094	0.049	0.167	0.073	0.047	0.125
90	0.418	0.118	0.070	0.209	0.094	0.087	0.167
90	0.501	0.118	0.094	0.251	0.118	0.129	0.209
90	0.585	0.139	0.137	0.251	0.136	0.171	0.251

ENGLISH		INCHES							TPH
Model	HP	A	B	C	D	E	F	G	UP TO*
LB21	7.5	20-5/8"	43-1/2"	20-5/8"	18"	19-1/4"	43-9/16"	11"	100
LB36	10	36"	55-7/16"	25-1/2"	22-3/4"	24-1/4"	64-3/4"	18"	230
LB54	15	54"	47-7/32"	25-1/2"	21-5/16"	24-7/8"	81-3/8"	18"	350
LB90	25	90"	65-3/4"	25-1/2"	24"	27-5/8"	120"	18"	595
METRIC		METERS							MTPH
Model	KW	A	B	C	D	E	F	G	UP TO*
LB21	6	0.5239	1.105	0.523	0.4572	0.4889	1.106	0.279	91
LB36	8	0.9144	1.408	0.647	0.5779	0.6159	1.645	0.457	208
LB54	8	1.372	1.199	0.647	0.5413	0.6318	2.067	0.457	318
LB90	19	2.286	1.67	0.647	0.6096	0.7017	3.048	0.457	540

\*Capacities based on 60 PCF friable dry free-flowing bulk materials. The percentage of lumps and their hardness will adversely affect capacities.

The A. J. Sackett & Sons Company  
 1701 South Highland Avenue  
 Baltimore, MD 21224 USA  
 410-276-4466, Fax 410-276-0241  
 www.ajsackett.com - e-mail: sales@ajsackett.com